



Spool Converter Pro

Windows Form Designer

FormMax from Acrosoftware

Copyright © 2004 Acro Software Inc.

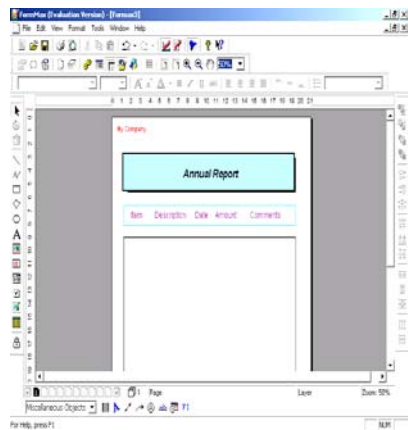
Due to an agreement with Acrosoftware, the Windows based form designer tool FormMax is included in the distribution of Spool Converter, without any extra cost for new and existing customers.

Reporting Software
i5/iSeries/AS400

FormMax is an excellent form designer for Windows environments.

With FormMax you can design your form and upload it to the AS400, and with a new option of Spool Converter you can import this form into Spool Converter rules.

For more information about FormMax you can visit the Acrosoftware web page at:
<http://www.acrosoftware.com>

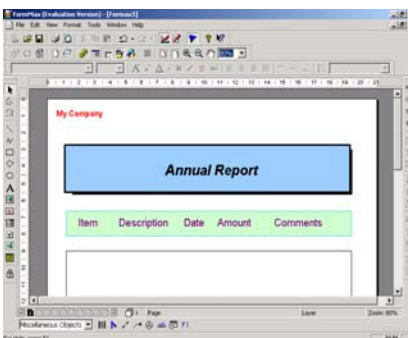


Spool Converter Pro allows to design PDF forms with graphical elements using logos, boxes, lines, colors and more. It is designed using transformation rules in AS400 'green screens' environment.

But we are conscious that users prefer a graphic environment to design their forms.

Using FormMax for Windows, you can design your form, and use it in AS400 following the next steps:

- Create a new form and design all the elements you desire using Acrosoftware FormMax (remember to save the form)
- Export the form to PDF format
- Upload this PDF to a physical AS400 file with record length 500 (for example using Ftp) or to the IFS
- In AS400, if not exist, create a new group of transformation rules
- Select option to work with the rules of the group
- You have available the F9 function key to create transformation rules based on the FormMax PDF form
- When we choose the F9 function, we are requested to fill the AS400 file name and library or the file name and path in IFS where the uploaded PDF is located
- When you press Enter, the process is executed
- Previous to create the transformation rules, the next rules are deleted: Page Attributes, Insert Text, Draw Box, Draw Line, Draw Circle



Important Considerations working with imported FormMax PDF forms

Spool Converter uses no standard page sizes, depending of the report size (80, 132 or 198 columns) or depending of the size defined by user with the Page Attributes rule. Using FormMax, will be created a Page Attribute rule with the page size of the imported form. Spool Converter defines font size 12 as default. Depending of the imported form, this size would must be changed to be compliance with the form. To allow this, the new Font Size field has been implemented in the Page Attributes rule.

The resulting PDF AS400 forms will be identical to the designed forms in Windows environment. It is possible to obtain some insignificant differences with wide borders of boxes or the wide of the lines.

Range of available colors has been modified in AS400. With this, all the colors defined with FormMax will be obtained in AS400 PDF generation.

In AS400 is available the Circle rule. With FormMax you can define ellipses. By now, ellipses are not supported in AS400. If you define an ellipse, it will contain two radius: horizontal and vertical. In AS400 generation you will obtain a circle with the radius value of the horizontal radius.

Importing images is not supported. If you design an image in your FormMax form, this will be ignored in the AS400 importing process. If you want to work with images, you must define with the Insert Image Spool Converter rule.

Additional features of FormMax as barcodes, arrows, circle text, and others, are not supported by importing process.

Rotate Text feature is supported.